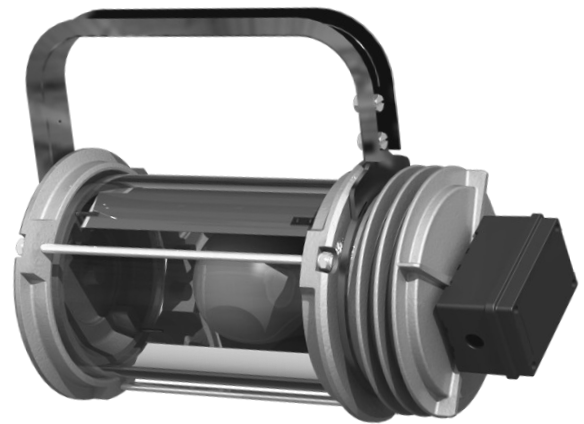


Zone 1, 2, 21, 22



APPLICATION

The floodlight is designed to light the industrial areas and facilities, also outdoor spaces with an explosion hazard of gases, vapors and flammable fogs mixed with air.
Hazardous zones: 1,2, 21, 22.

CONSTRUCTION

Housing: aluminium powder painted casting

Diffuser: borosilicate tube glass

Accessories: protected galvanized steel gird, assembly kit for wall, pipe and ceiling mounting

TECHNICAL DATA

Certificate:	CESI 09 ATEX 001
Marking:	CE 0722
Apparatus category:	II 2GD
Marking of explosion protection:	Ex de IIC T4-T3 or Ex d IIC T4-T3 tD A21 IP66 T10°C-150°C
Environment temperature:	-20°C ≤ Ta ≤ +40°C - according to selection table
Degree of protection:	IP 66 in accordance with EN 60529+A1, category 1
Resistance to shock:	IK 08 in accordance with EN 50102
Insulation class :	I (protective earthing) in accordance with EN 61140
Rated voltage:	RLF/... HIT,HST,HME,QT -230/240 V (-10% / +6%) / 50 Hz RLF/... QL -230 V (200-277 V) - 50/60 Hz ili (190-264 V) - DC
Frequency:	50Hz (60Hz on request)
Rated power:	See selection table
Power factor:	RLF/... HIT,HST,HME,QT - cos φ > 0,9 ind. RLF/... QL - λ > 0,92 THD < 10 %
Cable entries:	RLF/... HIT,HST,HME,QT - three entries M20, with two Ex d plug and one Ex de adapter, type ADP 03/23, for cable φ6-15 mm RLF/... QL - two entries M25 into Ex e junction box with one Ex e cable gland , type SPU 25, for cable φv 6-15 mm and one Ex e plug, type SPC 25
Connecting terminals:	RLF/... HIT,HST,HME,QT -clamps in Ex de adapter for connection L1, L2, N, PE, 2,5mm2 max. / clamp - solid, stranded; tightening torque for clamp screw 1,2 Nm;
Weight:	See selection table

MOUNTING

Pendant, on pipe, wall, ceiling mounting

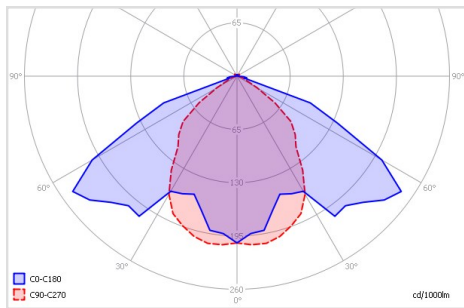
Wall or ceiling mounting is possible with RLF carrier and M12 screws. Also, it is possible to fixate luminaire to 2" pipe or other round surface with U-Bolts.

EX FLOODLIGHT type RLF

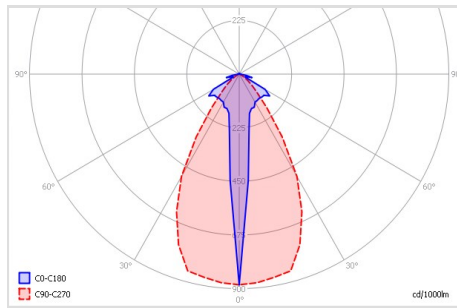
MODEL CODE

MODEL CODE	WATTAGE	LAMP TYPE	LUMINOUS FLUX [lm]	LAMP HOLDER	TEMPERATURE CLASS (gas)	T ₀ MAX (dust)	WEIGHT
					T _a =40°C	T _a =40°C	
RLF/250 HIT	250 W	HIE	20000	E40	T4	130°C	25 kg
RLF/250 HST		HST	33200				
RLF/250 HME		HME	13000				
RLF/400 HIT	400 W	HIE	34000		T3	190°C	27 kg
RLF/400 HST		HST	56500				
RLF/400 HME		HME	22000				
RLF/500 QT	500 W	QT	6300	QL	T4	130°C	22 kg
RLF/85 QL	85 W	QL	6300				
RLF/165 QL	165 W	QL	12000				

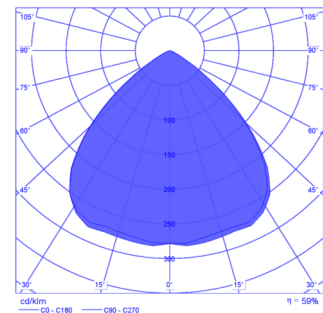
POLAR CURVE, DIMENSION DRAWING [mm]



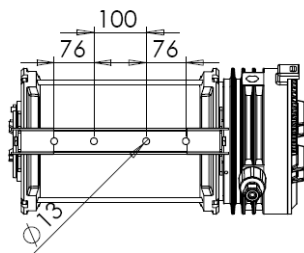
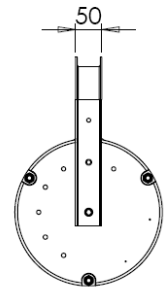
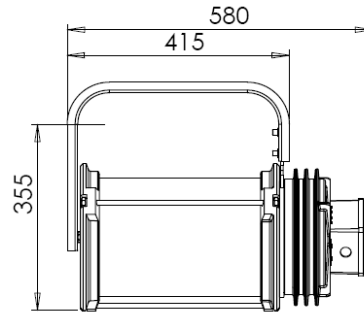
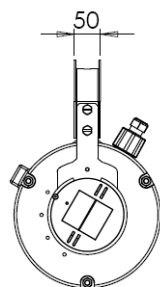
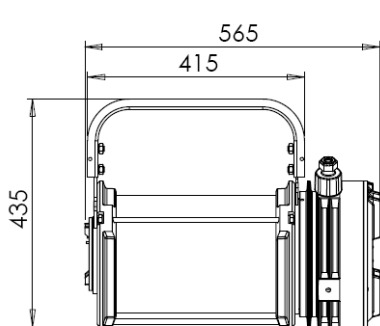
Wide beam reflector



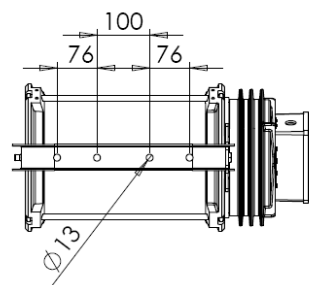
Narrow beam reflector



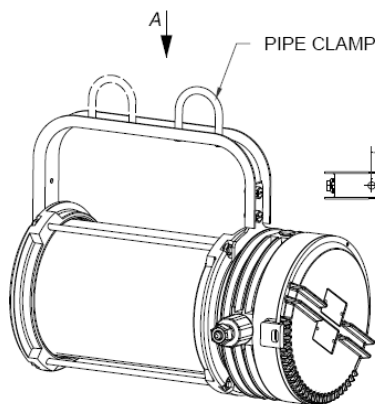
QL 165 W



RLF/...

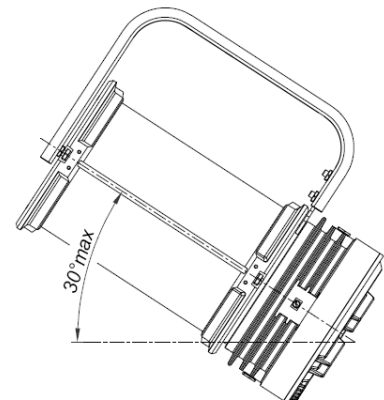
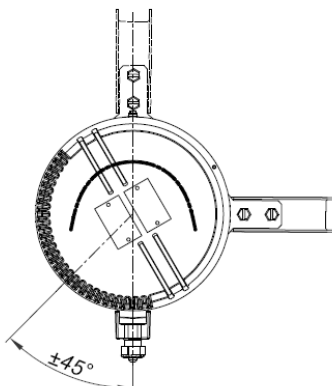
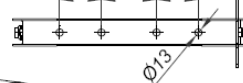


RLF/..QL



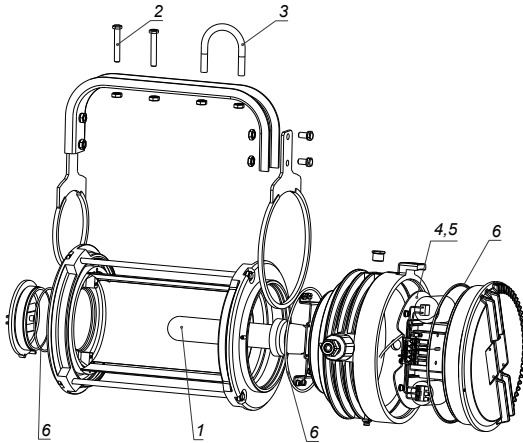
PIPE CLAMP max. 2"

View "A"



SPARE PARTS AND ACCESSORIES

If it is not ordered differently, floodlight **RLF/ ... HIT,HST,HME,QT** presume floodlight with RLF carrier, one Ex de adapter ADP 03/32 and two Ex d plugs, without light source and mounting accessories. Manufacturer will deliver spare parts and accessories on buyer request.

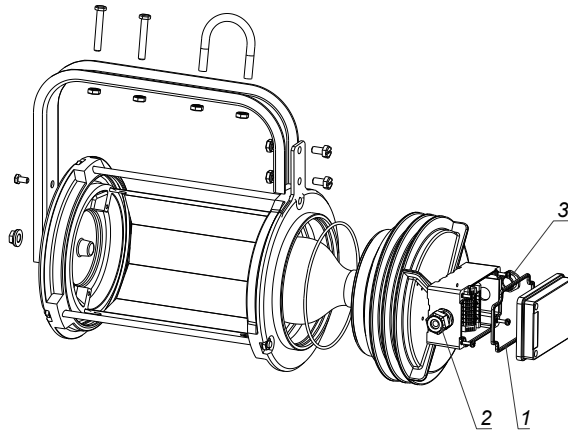


Accessories RLF ... :

- 4. set bed plate RLF/ ... HIT, HST
- 5. set bed plate RLF/ ... HME
- 6. gaskets RLF/..., set
- 7. adapter Ex ed, type ADP 03/23
- 8. plug Ex d M20

Spare parts RLF ...:

- 1. Light source, according to table
- 2. Screws for mounting M12 x 40 ISO 4017 A4-80, set
- 3. Bolts in „U“ shape M12 - A64/NW50 DIN 3570 A4, set



Spare parts RLF QL :

- 1. junction box gasket Ex e type MMK 13
- 2. gland Ex e type SPU 25, M25 with gasket and nut
- 3. plug Ex e type SPC 25, M25 with gasket and nut

If it is not ordered differently, floodlight **RLF/... QL** presume floodlight with RLF QL carrier, one Ex e junction box MMK 13 with Ex e connecting terminals, Ex e M25 cable gland, Ex e M25 plug, and Philips QL Induction Lighting System, without mounting accessories. Manufacturer will deliver spare parts and accessories on buyer request.

